


# HOME COLLECTION

2025



INTEGRATED BESPOKE SOLUTIONS  
FOR INDOORS & OUTDOORS



For more than four decades, Focal has created speaker drivers and high-end loudspeakers that deliver a unique sound. Our brand values are innovation and performance; excellence and pleasure. We are globally renowned for our exclusive technologies. The result of this technological heritage is class-leading products offering a natural, authentic performance, imbued with clarity and power.

With our collection of custom integrated loudspeakers, we offer an outstanding listening quality with our varied, complementary and discreet solutions.





HOME CINEMA

KITCHEN



BATHROOM

OUTDOORS



LIVING ROOM

BEDROOM



RESTAURANT

PUBLIC PLACES

# GLOSSARY

## RANGES

- UTOPIA CINEMA**  
Exclusive 'W' technology  
and 'M'-shaped Beryllium tweeter
- 1000 SERIES**  
Exclusive 'W' technology  
and Beryllium tweeter
- 300 SERIES**  
Exclusive Flax technology  
and Aluminium/Magnesium tweeter
- 100 SERIES**  
Polyglass technology  
and Aluminium tweeter
- LITTORA 1000**  
IP Fiber technology  
and Beryllium tweeter
- LITTORA 200**  
IP Iris technology  
and Aluminium 'M' tweeter

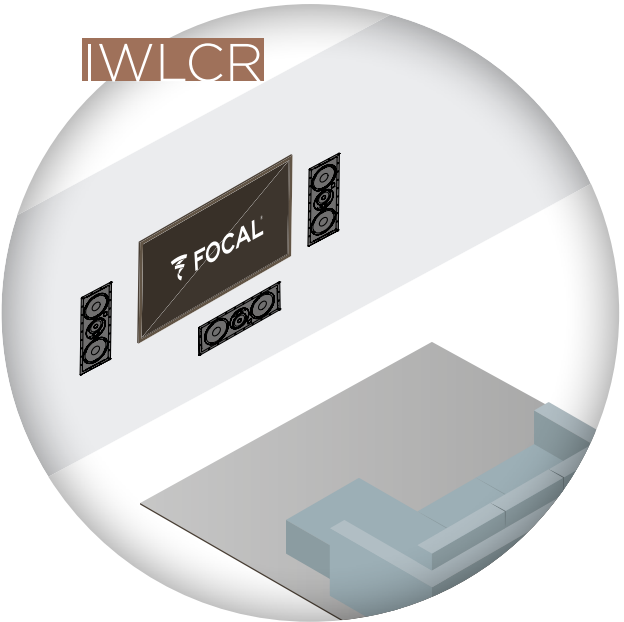


## APPLICATIONS

- IC In-Ceiling**  
In-ceiling loudspeaker
- IW In-Wall**  
In-wall loudspeaker
- ICW In-Wall / In-Ceiling**  
In-wall and in-ceiling loudspeaker
- IWLCR In-Wall Left Center Right**  
In-wall loudspeaker for left, center,  
right and surround channels
- ICLCR In-Ceiling Left Center Right**  
In-ceiling loudspeaker for left, center, right  
and surround channels
- ICA In-Ceiling Angled**  
In-ceiling angled loudspeaker  
for Dolby Atmos® effects
- ST Stereo**  
In-wall and in-ceiling loudspeaker  
producing a stereo effect
- OD Outdoor**  
IP-certified\* outdoor loudspeaker
- SAT Satellite**  
Discreet loudspeaker  
with multi-purpose fastenings
- STONE Stone**  
Stone-effect outdoor loudspeaker
- SUB Subwoofer**  
Integrated subwoofer
- T 70 - 100 V transformer**  
To cover a very large  
listening area
- UL UL certification**  
Fire and electric shock  
safety feature risks

## SPEAKER DRIVER DIAMETER

- 4** 4" or 10cm
- 5** 5" or 13cm
- 6** 6½" or 16.5cm
- 8** 8" or 20cm
- 10** 10" or 25cm
- 12** 12" or 30cm



\*IP codes are international standards used to identify the degrees of protection of products against the ingress of solid or liquid foreign objects. The first digit of the IP code represents the level of protection against the ingress of dust (0 to 6), the second represents the level of protection against water (0 to 8).







## INDOOR SOLUTIONS

13



## OUTDOOR SOLUTIONS

75



## ELECTRONICS

95



## COMMERCIAL SOLUTIONS

125

---

# INDOOR SOLUTIONS

- 01. UTOPIA CINEMA 15
  - 02. 1000 SERIES 21
  - 03. 300 SERIES 29
  - 04. 100 SERIES 35
  - 05. ON WALL 300 43
  - 06. DÔME FLAX 49
  - 07. SIB EVO 55
  - 08. SUBWOOFERS 63
  - ACCESSORIES 135
- 



---

# 01. UTOPIA CINEMA

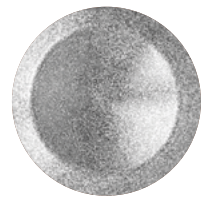
## Utopia-sized immersion

For uncompromising sound, from post-production to in-room listening, Focal engineers are constantly innovating. The UTOPIA CINEMA Integration range combines cutting-edge technologies with unmatched craftsmanship, delivering sensational, tailor-made sound immersion for private cinema rooms of up to 2153sq ft (200m<sup>2</sup>). With Cinema LCR and Cinema SUB, dialogue clarity and action scenes are rendered with exceptional precision, while maintaining a discreet installation.

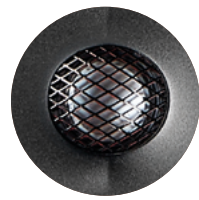
---







'W'  
sandwich cone



Pure 'M'-shaped  
Beryllium tweeter



Large laminar  
port



Speakon terminal block  
and push-button



Performance  
optimization settings



Unlimited  
modularity





CINEMA LCR

CINEMA SUB

Type	3-way on-wall, in-wall or freestanding bass-reflex	
Tuned port	35Hz	
Speaker drivers	<div><div><ul style="list-style-type: none"><li>• 13" 'W' cone woofer</li><li>• 5" 'W' cone 'M'-shaped midrange</li><li>• 1.5" 'M'-shaped Beryllium tweeter</li></ul></div><div><ul style="list-style-type: none"><li>• 2 x 13" 'W' cone woofers</li></ul></div></div>	
Frequency response	35Hz - 50kHz	
Sensitivity (2.83V/1m)	93dB	
Nominal impedance	8Ω	
Recommended amp power	Max 400W (8Ω) / Max 800W (4Ω)	
Settings	Midbass	-2.5dB / 0dB / +2.5dB (100Hz - 400Hz)
	Midrange	-1.5dB / 0dB / +3dB (400Hz - 2,5kHz)
	Treble	-2dB / 0dB / +2dB (2.5kHz - 10kHz)
	Listening position	0° / 30°
Dimensions (HxWxD)	45 <sup>7</sup> / <sub>8</sub> x 13 <sup>7</sup> / <sub>8</sub> x 12 <sup>1</sup> / <sub>16</sub> " (116.5 x 35.2 x 32.6 cm)	
Mounting depth	12 <sup>1</sup> / <sub>16</sub> " (32.6 cm)	
Weight	114.6lbs (52kg)	

Type	Subwoofer on-wall, in-wall or freestanding bass-reflex	
Tuned port	19Hz	
Speaker drivers	<div><div><ul style="list-style-type: none"><li>• 2 x 13" 'W' cone woofers</li></ul></div></div>	
Frequency response	42Hz - 2,500Hz	
Sensitivity (2.83V/1m)	95dB	
Nominal impedance	5Ω	
Recommended amp power	Max 400W (8Ω) / Max 800W (4Ω)	
Dimensions (HxWxD)	45 <sup>7</sup> / <sub>8</sub> x21 <sup>5</sup> / <sub>8</sub> x12 <sup>1</sup> / <sub>16</sub> " (116.5 x 54.9 x 32.6 cm)	
Mounting depth	12 <sup>1</sup> / <sub>16</sub> " (32.6 cm)	
Weight	160.9lbs (73kg)	





---

# 02.

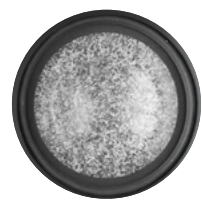
## 1000 SERIES

### Unrivalled listening experiences

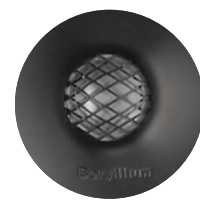
With seven exceptional products, the 1000 Series line promises excellent stereo and Home Cinema sound reproduction. These in-wall and in-ceiling loudspeakers are discreet, complementary, and can be adjusted and positioned for flawless sound spatialisation without compromise in your listening area. Both Utopia products enhance the line with their power and their design, specifically thought out to be assembled together.

---

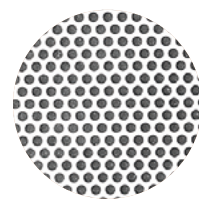




'W'  
sandwich cone



Pure Beryllium  
tweeter



Ready-to-paint  
grille



Positionable  
speaker drivers



Bespoke  
solution



Easy Quick  
Install®







# UTOPIA

The icon far ahead of the rest

The collection’s iconic flagship product, the 1000 Series Utopia loudspeaker does a sensational job at picking up the smallest sound details in films. Thanks to its mid-high range plate in the d’Appolito configuration, and with different speaker driver settings, the installation can be fully customised. For the ultimate system, the 1000 Series Utopia subwoofer has been designed to combine perfectly with the loudspeaker and to offer exceptional bass.

HANDCRAFTED  
IN FRANCE



1000 IWLCR UTOPIA



1000 IWSUB UTOPIA

Type	3-way closed-back in-wall		Closed-back in-wall subwoofer	
Speaker drivers	<ul style="list-style-type: none"><li>4 x 6 1/2" (16.5cm) 'W' Bass</li><li>2 x 3 1/8" (8cm) 'W' cone 'M'-shaped Midrange</li><li>1" (27mm) pure Beryllium inverted dome tweeter</li></ul>		3 x 6 1/2" (16.5cm) Bass with 'W' cone	
Frequency response	45Hz - 40kHz		40Hz - 2.5kHz	
Sensitivity (2.83V/1m)	92dB		83dB	74dB
Nominal impedance	8Ω		8Ω	72Ω
Recommended amp power	100 - 750W (8Ω) 200 - 1,500W (4Ω)		100 - 750W (8Ω) 200 - 1,500W (4Ω)	300 - 4,000W (8Ω) 300 - 4,000W (4Ω)
Settings	Tweeter (-3dB, 0dB, +3dB) Midrange (-2dB, 0dB, +2dB) Bass (-2dB, 0dB, +2dB)		Impedance selector 8Ω - 72Ω	
Dimensions (HxWxD)	45 3/4 x 12 x 4" (116.2 x 30.5 x 10.1cm)		23 3/8 x 12 x 4" (59.3 x 30.5 x 10.1cm)	
Mounting dimensions (HxW)	44 5/8 x 10 7/8" (113.4 x 27.6cm)		22 1/4 x 10 7/8" (56.4 x 27.6cm)	
Mounting depth	3 7/8" (9.9cm)		3 7/8" (9.9cm)	
Weight (with grille)	42.77lbs (19.4kg)		21.16lbs (9.6kg)	
Accessory (optional)	On-Wall frame		On-Wall frame	



1000 IWLCR6

1000 IW6

Type	3-way closed-back in-wall	2-way closed-back in-wall
Speaker drivers	<ul style="list-style-type: none"><li>7" (18cm) 'W' Passive radiator</li><li>6<sup>1</sup>/<sub>2</sub>" (16.5cm) 'W' Bass</li><li>3"(8cm) 'W' Midrange</li><li>1" (27mm) Pure Beryllium inverted dome tweeter</li></ul>	<ul style="list-style-type: none"><li>6<sup>1</sup>/<sub>2</sub>" (16.5cm) 'W' Mid-Bass</li><li>1" (27mm) Pure Beryllium inverted dome tweeter</li></ul>
Frequency response	48Hz - 40kHz	55Hz - 40kHz
Sensitivity (2.83V/1m)	91dB	89dB
Nominal impedance	8Ω	8Ω
Recommended amp power	50 - 180W	25 - 150W
Settings	Tweeter (-3dB, 0dB, +3dB) Midrange (-3dB, 0dB, +3dB)	Tweeter (-3dB, 0dB, +3dB)
Dimensions (HxWxD ou ØxD)	29 <sup>3</sup> / <sub>4</sub> x 12 x 4" (75.5 x 30.5 x 10.1cm)	17 <sup>1</sup> / <sub>8</sub> x 12 x 4" (43.5 x 30.5 x 10.1cm)
Mounting dimensions (HxW ou Ø)	28 <sup>5</sup> / <sub>8</sub> x 10 <sup>7</sup> / <sub>8</sub> " (72.6 x 27.6cm)	16 x 10 <sup>7</sup> / <sub>8</sub> " (40.6 x 27.6cm)
Mounting depth	3 <sup>7</sup> / <sub>8</sub> " (9.9cm)	3 <sup>7</sup> / <sub>8</sub> " (9.9cm)
Weight (with grille)	24.14lbs (10.95kg)	14.88lbs (6.75kg)
Accessory (optional)	On-wall frame	On-wall frame



1000 ICLCR5

1000 ICA6

1000 ICW6

3-way bass-reflex in-ceiling	2-way coaxial in-ceiling	2-way coaxial in-wall/in-ceiling
<ul style="list-style-type: none"><li>2 x 5" (13cm) 'W' Bass</li><li>4" (10cm) 'W' Midrange</li><li>1" (25mm) Beryllium inverted dome tweeter</li></ul>	<ul style="list-style-type: none"><li>6<sup>1</sup>/<sub>2</sub>" (16.5cm) 'W' Mid-Bass</li><li>1" (25mm) Pure Beryllium inverted dome tweeter</li></ul>	<ul style="list-style-type: none"><li>6<sup>1</sup>/<sub>2</sub>" (16.5cm) 'W' Mid-Bass</li><li>1" (25mm) Pure Beryllium inverted dome tweeter</li></ul>
53Hz - 40kHz	55Hz - 40kHz	55Hz - 40kHz
91dB	90.5dB	89dB
8Ω	8Ω	8Ω
25 - 240W	25 - 150W	25 - 150W
Tweeter (-3dB, 0dB, +3dB) Midrange (-3dB, 0dB, +3dB)	Tweeter (-3dB, 0dB, +3dB)	Tweeter (-3dB, 0dB, +3dB)
14 <sup>5</sup> / <sub>8</sub> x 14 <sup>5</sup> / <sub>8</sub> x 7 <sup>5</sup> / <sub>8</sub> " (37 x 37 x 19.5mm)	11 <sup>3</sup> / <sub>4</sub> x 5" (29.9 x 12.7cm)	9 <sup>5</sup> / <sub>8</sub> x 4 <sup>1</sup> / <sub>8</sub> " (24.4 x 10.5cm)
13 <sup>3</sup> / <sub>8</sub> x13 <sup>3</sup> / <sub>8</sub> " (34 x 34cm)	10 <sup>3</sup> / <sub>8</sub> " (26.4cm)	8 <sup>1</sup> / <sub>2</sub> " (21.6cm)
7 <sup>1</sup> / <sub>2</sub> " (19cm)	5 <sup>3</sup> / <sub>4</sub> " (14.6cm)	4" (10cm)
18.30lbs (8.3kg)	6.61lbs (3kg)	5.29lbs (2.4kg)
-	-	-

---

# 03.

## 300 SERIES

**A source of inspiration...**

Bring a whole new vibe to your spaces with the 300 Series and its natural flax cone speaker drivers. In addition to the acoustic qualities and sound clarity they offer, the products are innovatively designed and quick to fit, thanks to the Easy Quick Install® (EQI) system. Whether for stereo or Home Cinema use, or as a complement to a traditional hi-fi system, all you have to do is make your choice and enjoy.

---



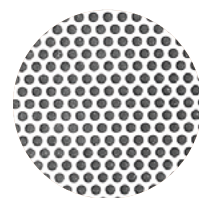




Flax  
cone



Al/Mg  
tweeter



Ready-to-paint  
grille



Positionable  
plate



Tweeter and  
midrange settings



Easy Quick  
Install®





300 IWLCR6



300 IW6



300 ICLCR5

Type	3-way in-wall	2-way in-wall	3-way bass-reflex in-ceiling
Speaker drivers	<ul style="list-style-type: none"><li>• 2 x 6 1/2" (16.5cm) Woofer</li><li>• 4" (10cm) Flax Midrange</li><li>• 1" (25mm) Al/Mg inverted dome tweeter</li></ul>	<ul style="list-style-type: none"><li>• 6 1/2" (16.5cm) Flax cone Mid-Bass</li><li>• 1" (25mm) Al/Mg inverted dome tweeter</li></ul>	<ul style="list-style-type: none"><li>• 2 x 5" (13cm) Flax Woofer</li><li>• 4" (10cm) Flax Midrange</li><li>• 1" (25mm) Al/Mg inverted dome tweeter</li></ul>
Frequency response	40Hz - 28kHz	55Hz - 28kHz	55Hz - 28kHz
Sensitivity (2.83V/1m)	92dB	90dB	91dB
Nominal impedance	8Ω	8Ω	8Ω
Recommended amp power	50 - 150W	25 - 130W	50 - 150W
Settings	Tweeter (-3dB, 0dB, +3dB) Midrange (-3dB, 0dB, +3dB)	Tweeter (-3dB, 0dB, +3dB) Midrange (-3dB, 0dB, +3dB)	Tweeter (-3dB, 0dB, +3dB) Midrange (-3dB, 0dB, +3dB)
Dimensions (HxWxD or ØxD)	23 5/8 x 8 1/16 x 3 7/8" (60 x 22 x 9.8cm)	12 3/4 x 8 1/16 x 3 7/8" (32.3 x 22 x 9.8cm)	14 9/16 x 14 9/16 x 7 11/16" (37 x 37 x 19.5cm)
Mounting dimensions (HxW ou Ø)	22 3/8 x 7 1/2" (56.8 x 19.1cm)	11 1/2 x 7 1/2" (29.2 x 19.1cm)	13 3/8" x 13 3/8" (34 x 34cm)
Mounting depth	3 5/8" (9.3cm)	3 5/8" (9.3cm)	7 1/2" (19cm)
Weight	12.4lbs (5.65kg)	4.9lbs (2.25kg)	16.3lbs (7.4kg)



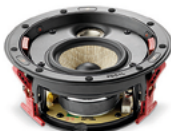
300 ICA6



300 ICW8



300 ICW6



300 ICW4

2-way coaxial in-ceiling	2-way coaxial in-wall/in-ceiling	2-way coaxial in-wall/in-ceiling	2-way in-wall/in-ceiling
<ul style="list-style-type: none"><li>• 6 1/2" (16.5cm) Flax Mid-Bass</li><li>• 1" (25mm) Al/Mg inverted dome tweeter</li></ul>	<ul style="list-style-type: none"><li>• 8" (21cm) Flax Mid-Bass</li><li>• 1" (25mm) Al/Mg inverted dome tweeter</li></ul>	<ul style="list-style-type: none"><li>• 6 1/2" (16.5cm) Flax Mid-Bass</li><li>• 1" (25mm) Al/Mg inverted dome tweeter</li></ul>	<ul style="list-style-type: none"><li>• 4" (10cm) Flax Mid-Bass</li><li>• 1" (25mm) Al/Mg inverted dome tweeter</li></ul>
65Hz - 28kHz	48Hz - 28kHz	65Hz - 28kHz	80Hz - 28kHz
89.5 dB	90dB	89dB	88dB
8Ω	8Ω	8Ω	8Ω
25 - 130W	25 - 150W	25 - 130W	25 - 100W
Tweeter (-3dB, 0dB, +3dB)	Tweeter (-3dB, 0dB, +3dB)	Tweeter (-3dB, 0dB, +3dB)	Tweeter (-3dB, 0dB, +3dB)
11 3/4 x 5" (29.9 x 12.7cm)	11 3/4 x 5" (29.9 x 12.7cm)	9 5/8 x 4 1/8" (24.4 x 10.5cm)	7 9/16 x 3 7/8" (19.2 x 9.8cm)
10 3/8" (26.4cm)	10 3/8" (26.4cm)	8 1/2" (21.6cm)	6 3/8" (16.3cm)
5 3/4" (14.6cm)	4 3/4" (12.2cm)	4 (10cm)	3 5/8" (9.3cm)
6.6lbs (3kg)	7.05lbs (3.2kg)	5.29lbs (2.4kg)	2.6lbs (1.3kg)



---

# 04.

## 100 SERIES

### Discreet musicality

A comprehensive solution for your home audio needs, indoors and outdoors, the 100 Series offers outstanding performance from a compact design. The range is ideal for small-to-medium-sized rooms, for seamless sound throughout the house, stereo listening or Home Cinema installations. The tropicalised Polyglass cone is even suited for bathroom use too.

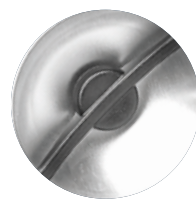
---



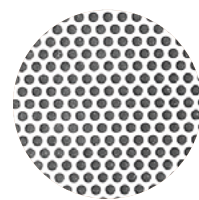




Polyglass  
cone



Aluminium  
tweeter



Ready-to-paint  
grille



Positionable  
tweeter

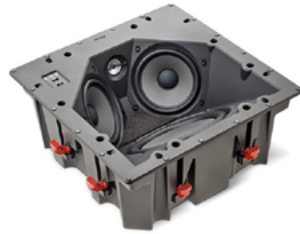


Tropicalised  
cone

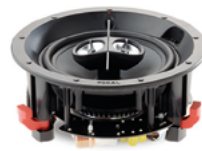


Compact design  
unibody chassis





	100 IWLCR5	100 IW6	100 ICLCR5
Type	2-way in-wall D'Appolito	2-way in-wall	2-way in-ceiling
Speaker drivers	<ul style="list-style-type: none"><li>• 2 x 5" (13cm) Polyglass Mid-Bass</li><li>• 1" (25mm) Aluminium inverted dome tweeter</li></ul>	<ul style="list-style-type: none"><li>• 6<sup>1</sup>/<sub>2</sub>" (16,5cm) Polyglass Mid-Bass</li><li>• 1" (25mm) Aluminium inverted dome tweeter</li></ul>	<ul style="list-style-type: none"><li>• 2 x 5" (13cm) Polyglass Mid-Bass</li><li>• 1" (25mm) Aluminium inverted dome tweeter</li><li>• 8" (21cm) Polyglass Passive radiator</li></ul>
Frequency response	55Hz - 23kHz	60Hz - 23kHz	65Hz - 23kHz
Sensitivity (2.83V/1m)	90.5dB	89dB	92dB
Nominal impedance	8Ω	8Ω	8 Ω
Recommended amp power	25 - 120W	25 - 120W	25 - 120W
Settings	Tweeter (-3dB, 0dB, +3dB) Midrange (-3dB, 0dB, +3dB)	Tweeter (-3dB, 0dB, +3dB) Midrange (-3dB, 0dB, +3dB)	Tweeter (-3dB, 0dB, +3dB)
Dimensions (HxWxD ou ØxD)	17 <sup>3</sup> / <sub>8</sub> x 6 <sup>3</sup> / <sub>4</sub> x 3 <sup>3</sup> / <sub>8"</sub> (44 x 17.3 x 8.6cm)	11 <sup>3</sup> / <sub>4</sub> x 7 <sup>5</sup> / <sub>8</sub> x 3 <sup>5</sup> / <sub>8"</sub> (29.8 x 19.5 x 9.2cm)	14 x 14 x 5 <sup>5</sup> / <sub>16"</sub> (35.4 x 35.4 x 15cm)
Mounting dimensions (HxW ou Ø)	16 <sup>3</sup> / <sub>8"</sub> x 5 <sup>3</sup> / <sub>4</sub> (41.5 x 14.7cm)	10 <sup>3</sup> / <sub>4</sub> x 6 <sup>3</sup> / <sub>4"</sub> (27.3 x 17cm)	12 <sup>7</sup> / <sub>8</sub> x 12 <sup>7</sup> / <sub>8"</sub> (32.8 x 32.8cm)
Mounting depth	3 <sup>1</sup> / <sub>4"</sub> (8.3cm)	3 <sup>1</sup> / <sub>2"</sub> (8.8cm)	6" (15.2cm)
Weight	3.89lbs (2.9kg)	4.1lbs (1.85kg)	11.6lbs (5.3kg)



100 IC6ST	100 ICW8	100 ICW6	100 ICW5
2-way stereo coaxial in-ceiling	2-way coaxial in-wall/in-ceiling	2-way coaxial in-wall/in-ceiling	2-way coaxial in-wall/in-ceiling
<ul style="list-style-type: none"><li>• 6<sup>1</sup>/<sub>2</sub>" (16,5cm) Dual voice coil Polyglass Mid-Bass</li><li>• 2 x 1" (25mm) Aluminium inverted dome tweeter</li></ul>	<ul style="list-style-type: none"><li>• 8" (21cm) Polyglass Mid-Bass</li><li>• 1" (25mm) Aluminium inverted dome tweeter</li></ul>	<ul style="list-style-type: none"><li>• 6<sup>1</sup>/<sub>2</sub>" (16.5cm) Polyglass Mid-Bass</li><li>• 1" (25mm) Aluminium inverted dome tweeter</li></ul>	<ul style="list-style-type: none"><li>• 5" (13cm) Polyglass Mid-Bass</li><li>• 1" (25mm) Aluminium inverted dome tweeter</li></ul>
60Hz - 23kHz	53Hz - 23kHz	62Hz - 23kHz	65Hz - 23kHz
89dB	90dB	89dB	88dB
8Ω	8Ω	8Ω	8Ω
25 - 100W	25 - 150W	25 - 100W	15 - 100W
Tweeter (-3dB, 0dB, +3dB)	Tweeter (-3dB, 0dB, +3dB)	Tweeter (-3dB, 0dB, +3dB)	Tweeter (-3dB, 0dB, +3dB)
8 <sup>3</sup> / <sub>16</sub> x 3 <sup>3</sup> / <sub>4"</sub> (20.8 x 9.5cm)	9 <sup>3</sup> / <sub>4</sub> x 4 <sup>3</sup> / <sub>8"</sub> (24.8 x 11.1cm)	8 <sup>3</sup> / <sub>16</sub> x 3 <sup>3</sup> / <sub>4"</sub> (20.8 x 9.5cm)	7 <sup>1</sup> / <sub>4</sub> x 3 <sup>7</sup> / <sub>16"</sub> (18.4 x 8.7cm)
7 <sup>1</sup> / <sub>4"</sub> (18.4cm)	8 <sup>1</sup> / <sub>16"</sub> (22.4cm)	7 <sup>1</sup> / <sub>4"</sub> (18.4cm)	6 <sup>5</sup> / <sub>16"</sub> (16cm)
3 <sup>5</sup> / <sub>8"</sub> (9.1cm)	4 <sup>1</sup> / <sub>4"</sub> (10.7mm)	3 <sup>3</sup> / <sub>4"</sub> (9.1cm)	3 <sup>1</sup> / <sub>4"</sub> (8.2cm)
3.86lbs (1.75kg)	3.86lbs (1.75kg)	3.3lbs (1.5kg)	3.19lbs (1.45kg)



100 IWSUB8

Type	Passive subwoofer
Speaker drivers	8" (21cm) Polyglass Woofer
Frequency response	34 - 140Hz
Sensitivity (2.83V/1m)	89dB
Nominal impedance	8Ω
Recommended amp power	Max 200W / 4Ω
Dimensions (WxDxH)	13 <sup>7</sup> / <sub>8</sub> x 3 <sup>7</sup> / <sub>8</sub> x 5 <sup>13</sup> / <sub>16</sub> " (130 x 9.8 x 35.2cm)
Mounting dimensions (WxH)	13 <sup>7</sup> / <sub>8</sub> x 5 <sup>13</sup> / <sub>16</sub> " (130 x 35.2cm)
Mounting depth	3 <sup>3</sup> / <sub>8</sub> " (8.6cm)
Weight	32.3lbs (14.6kg)



100 IWSUB8 AMPLIFIER

Type	Subwoofer amplifier
Power (continuous)	Max 200W, 150W continuous 4Ω
Minimum load	4Ω
Voltage range	100 - 120V / 60Hz 220 - 230V / 50Hz
Power consumption	150W
Stand-by power consumption	0.5W
Frequency response	20 - 250Hz
Subsonic filter	18dB / oct.
Inputs	LFE, Line in L/R
Outputs	Line out L/R and subwoofer out binding post
Cord	Detachable IEC power cord
Protection	Dynamic power control, thermal protection, short circuit, fuse and over-current protection
Dimensions (HxWxD)	1.8" (2" with feets) x 16.9" (19" with rack brackets) x 10.1"
Weight	6.8lbs (3.1kg)



PACK 2 x 100 IWSUB8 &  
100 IWSUB8 AMPLIFIER



PACK 100 IWSUB8 &  
100 IWSUB8 AMPLIFIER



---

# 05.

## ON WALL 300

**Creating emotion**

Designed for hi-fi and Home Cinema use, the allure of the On Wall 300 loudspeakers lies in their sleek design, 'angled' silhouette and incredible sound. Their speaker drivers boast a Flax cone to bring realism, vocal clarity and sonic detail into your home. Available in a White High Gloss or Black Satin finish, On Wall 300 blends seamlessly into interiors, around a television.

---







Flax  
cone



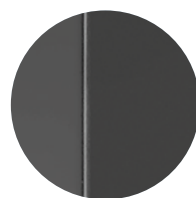
Al/Mg  
tweeter



Magnetic  
grille



Side  
ports








Black Satin  
finish



White High Gloss  
finish



			
			
ON WALL 301		ON WALL 302	
Type	2-way bass-reflex loudspeaker		
Speaker drivers	<ul style="list-style-type: none"><li>• 2 x 4" (10cm) Flax Mid-Bass</li><li>• 1 x 1" (25mm) Tweeter TNF</li></ul>		
Frequency response	53Hz - 28kHz		
Crossover frequency	2,500Hz		
Sensitivity (2.83V/1m)	87dB		
Nominal impedance	8Ω		
Recommended amp power	25 - 130W		
Dimensions (HxWxD)	31 <sup>1</sup> / <sub>2</sub> x 6 <sup>1</sup> / <sub>8</sub> x 3 <sup>9</sup> / <sub>16</sub> " (80 x 15.5 x 9cm)		
Finishes			
Weight	13lbs (5.9kg)		
	20.72lbs (9.4kg)		



Stands sold separately by pair.

ON WALL 300 STANDS





---

# 06.

## DÔME FLAX

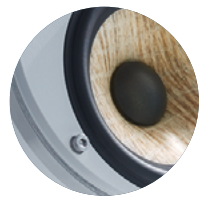
### The sound spotlight

Made in France, Dôme is a line of miniature loudspeakers boasting a Flax sandwich cone, exclusive to Focal. This technology provides genuine benefits in terms of sound definition and precision. In terms of appearance, the Dôme design blends fine materials and elegant finishes. The loudspeakers are positionable and easily integrated into the wall, ceiling or on a stand, as you prefer.

---







Flax  
cone



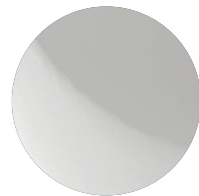
Al/Mg  
tweeter



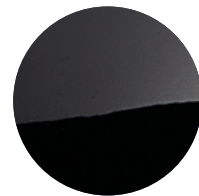
Optional  
stands



On-wall or on-ceiling  
mounting



White High Gloss  
finish





Black High Gloss  
finish









### DÔME FLAX

Type	2-way compact sealed speaker
Speaker drivers	<ul style="list-style-type: none"><li>• 4" (10cm) Flax Mid-Bass</li><li>• 1" (25mm) Al/Mg inverted dome tweeter</li></ul>
Frequency response	80Hz - 28kHz
Sensitivity (2.83V/1m)	88dB
Nominal impedance	8Ω
Recommended amp power	25 - 100W
Dimensions (HxWxD)	6 <sup>3</sup> / <sub>4</sub> x 5 <sup>11</sup> / <sub>16</sub> x 5 <sup>5</sup> / <sub>8</sub> " (17.2 x 14.4 x 14.3cm)
Finishes	 
Weight	4.19lbs (1.9kg)



### PACK DÔME FLAX 5.1

5 x Dôme Flax 1 x Sub Air
 



Stands sold separately by pair.

### DÔME STANDS



---

# 07.

## SIB EVO

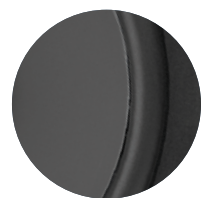
**At the heart of the action**

The line comprises one traditional loudspeaker, the Sib Evo, a second Sib Evo Dolby Atmos® model equipped with a specific speaker driver on top, and an active subwoofer, the Cub Evo. These satellite loudspeakers combine front and vertical diffusion thanks to the Dolby Atmos® effects created. The sound waves are projected onto the ceiling and are then reflected back to the listener for an immersive experience.

---



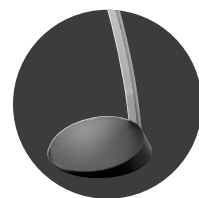




Polyflex  
speaker driver



Dolby Atmos®  
effects



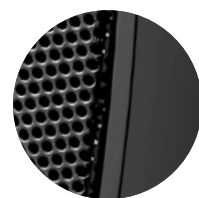
Optional  
stands



Compact  
loudspeaker

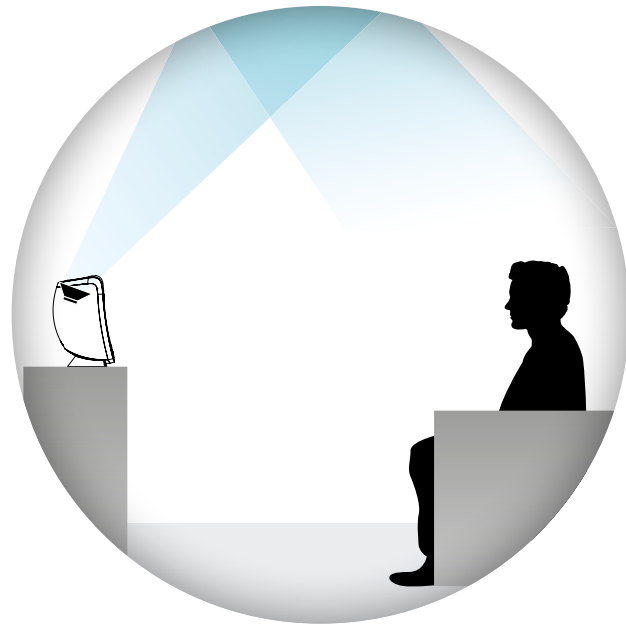


Optional wall  
attachments



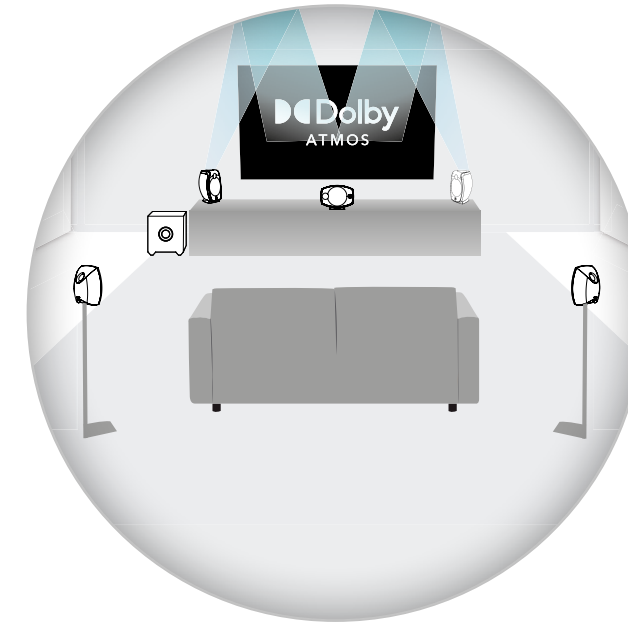
Black  
finish





# Dolby Atmos

Dolby Atmos® technology offers a cinema experience by creating powerful sound effects. You will find yourself at the heart of the action, music and dialogue of the films you watch, plunged into a 3D space of captivating realism. The Sib Evo loudspeakers equipped with Dolby Atmos® technology are called *enabled speakers*. In addition to the vertical speaker driver, a second is installed on the upper surface of the loudspeaker and directs the sound towards the ceiling at a carefully calculated angle, so that the signal is reflected around the entire room. The sound comes simultaneously from the front, back, sides and above.



## IMMERSIVE AUDIO

Dolby Atmos® technology isolates each sound from the original soundtrack and mix as an independent audio object. Imagine a scene in a house: you are hearing the conversations, the footsteps in the neighbouring room, sounds coming through the open window, all at the same time and spatialised in 3D, as though you were actually there... Dolby Atmos® comes into its own in scenes where the effects are vertical: a plane or helicopter passing overhead, a thunderstorm, pounding rain, etc. The Sib Evo 5.1.2 pack offers exceptional sound effects and adds a new dimension to films.



SIB EVO DOLBY ATMOS®

SIB EVO

Type	<ul style="list-style-type: none"><li>Front channel: 2-way bass-reflex loudspeaker</li><li>Dolby Atmos® channel: Full-range sealed loudspeaker</li></ul>	2-way compact bass-reflex loudspeaker
Speaker drivers	<ul style="list-style-type: none"><li>Front channel: 5" (13cm) Polyflex Woofer</li><li>¾" (19mm) soft dome tweeter</li><li>Dolby Atmos® channel: 4" (10cm) full-range speaker</li></ul>	<ul style="list-style-type: none"><li>5" (13cm) Polyflex Woofer</li><li>¾" (19mm) soft dome tweeter</li></ul>
Frequency response	<ul style="list-style-type: none"><li>Front channel: 65Hz to 25kHz</li><li>Dolby Atmos® channel: 90Hz to 20kHz</li></ul>	70Hz to 25kHz
Sensitivity (2.83V/1m)	90dB	90dB
Nominal impedance	6Ω	6Ω
Recommended amp power	25 - 200W	25 - 200W
Dimensions (HxWxD)	11 <sup>5</sup> / <sub>8</sub> x 7 <sup>1</sup> / <sub>16</sub> x 7 <sup>1</sup> / <sub>2</sub> " (29.5 x 19.5 x 19cm)	9 <sup>15</sup> / <sub>16</sub> x 6 <sup>3</sup> / <sub>8</sub> x 6 <sup>3</sup> / <sub>8</sub> " (25.2 x 16.2 x 16.2cm)
Weight	7lbs (3.25kg)	4lbs (1.8kg)



PACK SIB EVO DOLBY ATMOS® 5.1.2

3 x Sib Evo  
2 x Sib Evo Dolby Atmos®  
1 x Cub Evo  
2 x Wall attachments



PACK SIB EVO 5.1

5 x Sib Evo  
1 x Cub Evo  
2 x Wall attachments



WALL ATTACHMENTS

Wall attachment supplied with 5.1 and 5.1.2 packs.



HIP EVO STANDS

Hip Evo stands sold as optional extra.



---

# 08. SUBWOOFERS

**Dynamics, impact and depth**

The subwoofer is a major component of any audio installation, providing dynamics and intensity. With their sleek design, Focal subwoofers offer a deep, impactful and powerful bass. They effectively complement a wide range of configurations, from the most sophisticated Home Cinema installations to compact systems. All you have to do is choose the subwoofer for you!

---







SUB UTOPIA EM  
COLOUR EVO



SW 1000 BE



SUB 1000 F

Type	Stackable passive subwoofer		Active bass-reflex subwoofer	Active closed subwoofer
Speaker drivers	<ul style="list-style-type: none"><li>Electro-Magnetic 13" (33cm) 'W' Woofer</li><li>Stackable (up to 3 subwoofers tall)</li><li>Almost 130dB SPL at 1m (in a corner)</li></ul>		13" (33cm) 'W' Woofer	12" (30cm) Flax Woofer
Frequency response	22Hz - 500Hz		20Hz - 150Hz	24Hz - 160Hz
Response at - 6dB	19Hz		18Hz	22Hz
Features	Sensitivity (2.83V/1m)	93dB	<ul style="list-style-type: none"><li>LFE/Stereo/Digital inputs</li><li>Adjustable LPF: 50Hz to 150Hz (24dB/oct.), 48dB/oct.</li><li>Adjustable subsonic crossover</li><li>3 user memories</li><li>Night mode and Boost mode</li><li>Autopower</li></ul>	<ul style="list-style-type: none"><li>LFE/Stereo inputs</li><li>Adjustable subsonic crossover: 40Hz to 160Hz/12dB/Oct</li><li>Phase inverter: 0 - 180°</li><li>Autopower</li></ul>
	Nominal impedance	8Ω		
	Minimal impedance	5.5Ω		
	Recommended amp power	500 - 1,000W		
Amplifier power	-		600W BASH® amplifier	1000W BASH® amplifier
Finishes	 		-	-
Dimensions (HxWxD)	25 <sup>15</sup> / <sub>16</sub> x 19 x 24 <sup>1</sup> / <sub>2</sub> " (63.4 x 48.3 x 62.2cm)		21 <sup>1</sup> / <sub>16</sub> x 19 <sup>11</sup> / <sub>16</sub> x 17" (53.5 x 50 x 43.2cm)	16 <sup>17</sup> / <sub>32</sub> x 15 <sup>3</sup> / <sub>4</sub> x 16 <sup>17</sup> / <sub>32</sub> " (42 x 40 x 42cm)
Weight	158.5lbs (72kg)		92.4lbs (42kg)	47lbs (21.5kg)





SUB 600P



SUB AIR



CUB EVO

Active closed subwoofer	Flat bass-reflex subwoofer	Active bass-reflex subwoofer
12" (30cm) Polyflex Woofer	8" (21cm) Woofer cellulose pulp cone	8" (21cm) Polyflex Woofer
28Hz - 270Hz	42Hz - 200Hz	35Hz - 150Hz
26Hz	35Hz	30Hz
<ul style="list-style-type: none"><li>RCA input: Right, left, LFE</li><li>Variable crossover frequency: 40Hz - 200Hz (LFE)</li><li>Phase inverter: 0 - 180°</li><li>Auto Standby enable / disable</li></ul>	<ul style="list-style-type: none"><li>Wireless Transmitter (KLEER® technology) LFE and Left/Right Input</li><li>Variable crossover frequency: 50Hz to 200Hz</li><li>Autopower</li></ul>	<ul style="list-style-type: none"><li>Right, left LFE</li><li>Variable crossover frequency: 40Hz to 200Hz (LFE)</li><li>On/Autopower (0.5W)</li></ul>
600W Dynamic 300W RMS	150W BASH® amplifier	200W Class D amplifier
-	 	-
15 <sup>3/4</sup> x 15 <sup>3/4</sup> x 16 <sup>3/4</sup> " (40 x 40 x 42.5mm)	16.1 x 14.2 x 6.3" (41 x 36 x 16cm)	12 x 11 <sup>1/8</sup> x 11 <sup>3/4</sup> " (30.5 x 28.2 x 29.9cm)
46.3lbs (21kg)	17lbs (7.65kg)	17.5lbs (8kg)



1000 IWSUB  
UTOPIA

Closed-back in-wall subwoofer (see p.25)



100 IWSUB8

Passive subwoofer (see p.41)



---

## CI EXPERT OFFICIAL PARTNER

So you can optimise the full potential of our 1000 Series, our dedicated retailer network is on hand to listen to your requirements. These specialist teams are trained in Focal products and can assist you with any questions you may have. Our installers also have priority access to The Cinema Designer global software to accurately design your installation and offer a bespoke service.

---



Contact our CI Expert reseller network  
to help you create your Home Cinema:

[www.focal.com/ci-expert](http://www.focal.com/ci-expert)





## Your bespoke Home Cinema

The Focal Integration products are available on The Cinema Designer global database. This interactive cloud software pulls together the entire design process of an outstanding Home Cinema system. Based on the size of your room, it specifies the exact placement of the loudspeakers, screen, seats and projector. It details requirements in terms of amplification and much more.

---



---

# SIGNATURE SOUND

In its constant quest for the purest, most immersive and transparent sound, Focal infuses its energy and imagination into the design of loudspeakers to meet every listening and installation need. Traditional floor-standing models or models integrated into walls and ceilings: all speakers benefit from Focal know-how and the same exclusive technologies. They offer a high-fidelity sound harmonious between the ranges and, more broadly, the unique Focal sound signature that will magnify the singularity of every living space.

---









---

# OUTDOOR SOLUTIONS

**01.** LITTORA 1000 77

**02.** LITTORA 200 83

**03.** 100 SERIES 89





---

# 01. LITTORA 1000

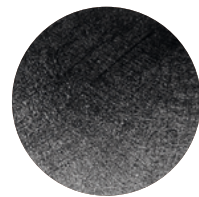
## The sound of French Riviera

Experience sensational music-inspired emotion on dry land and at sea: that's the promise made by the Littora 1000 products. Discreetly fitted in the walls and ceilings of yachts and premises located in coastal environments, and spaces such as spas and steam rooms, these products are inspired by the Utopia line of in-wall / in-ceiling products to offer the best outdoor and indoor sound. Equipped with a brand new Fiber IP cone, they benefit from the international IP65 certification, guaranteeing their perfect waterproofing in marine and other wet environments.

---



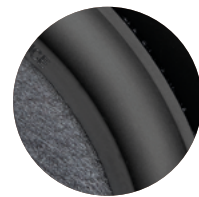




IP Fiber  
cone



Beryllium  
tweeter



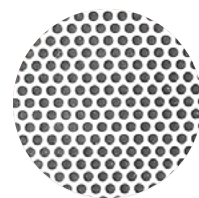
Certified (IP65)  
waterproofing



Indoor/Outdoor  
mode



Adjustable  
treble level



Ready-to-paint  
grille







	1000 ICW8	1000 ICW10	1000 ICW SUB10
Type	2-way coaxial in-wall/in-ceiling	2-way coaxial in-wall/in-ceiling	Subwoofer in-wall/in-ceiling
Speaker drivers	<ul style="list-style-type: none"><li>8" (20cm) Fiber IP Mid-Bass</li><li>1" (25mm) pure Beryllium 'M'-shaped inverted dome tweeter</li></ul>	<ul style="list-style-type: none"><li>10" (25cm) Fiber IP Mid-Bass</li><li>1" (25mm) pure Beryllium 'M'-shaped inverted dome tweeter</li></ul>	10" (25cm) Fiber IP Woofer
Frequency response	45Hz - 40kHz	38Hz - 40kHz	25Hz - 500Hz
Sensitivity (2.83V/1m)	91dB	92dB	90dB
Nominal impedance	8Ω	8Ω	8Ω
Recommended amp power	50 - 180W	50 - 200W	100 - 300W
Settings	Tweeter (-3dB, 0dB, +3dB) Crossover: Indoor/Outdoor switch	Tweeter (-3dB, 0dB, +3dB) Crossover: Indoor/Outdoor switch	-
Operating temperatures	-25°C to 90°C	-25°C to 90°C	-25°C to 90°C
UV resistance	Yes	Yes	Yes
Dimensions (ØxD)	10⅞ x 4⅞" (25.6 x 12.3cm)	10⅞ x 5¼" (27.8 x 13.3cm)	11½ x 5⅜" (29.3 x 13.6cm)
Mounting dimension (Ø)	9⅞" (23.1cm)	12" (30.5cm)	12¾" (32.2cm)
Mounting depth	4½" (11.3cm)	4¾" (12.2cm)	4⅞" (12.3cm)
Weight	4.1lbs (2.2kg)	5.8lbs (2.5kg)	10.2lbs (4.6kg)
Accessory (optional)	8" tilted stand	10" tilted stand	10" tilted stand





---

# 02.

## LITTORA 200

### The Sound of French Riviera

Whether you're on the deck of a yacht, in a spa, a garden, on a terrace, or by the pool - bring Focal sound quality to your outdoor space with speaker drivers and loudspeakers as high performing as they are discreet, and as hard-wearing as they are elegant. Versatility and ease of integration characterise the Littora 200 products, which can be installed anywhere and for an impressive period of time, thanks to their certified watertight Iris IP cone. While the in-wall and in-ceiling speaker drivers blend in seamlessly, the outdoor loudspeakers present unique design and finishes, like OD Stone 8.

---







Iris IP  
cone



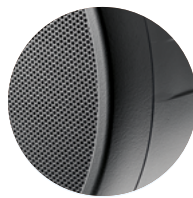
Aluminium  
tweeter



Certified (IP65/IP55)  
waterproofing



Sonic coherence,  
allround system



Sleek  
design



Hard-wearing  
finishes







	OD SAT 5	OD SUB 12	OD STONE 8
Type	2-way outdoor speaker	Buried outdoor subwoofer	2-way outdoor speaker
Speaker drivers	<ul style="list-style-type: none"><li>5" (13cm) Iris IP Mid-Bass</li><li>1" (25mm) Aluminium 'M'-shaped inverted dome tweeter</li></ul>	12" (30 cm) Iris IP Woofer	<ul style="list-style-type: none"><li>8" (20cm) Iris IP Mid-Bass</li><li>1" (25mm) Aluminium 'M'-shaped inverted dome tweeter</li></ul>
Frequency response	90Hz - 28kHz	40Hz - 120Hz	45Hz - 28kHz
Sensitivity (2.83V/1m)	88dB	90dB	89dB
Nominal impedance	8Ω	6Ω	8Ω
Recommended amp power 8Ω	20W - 100W	50W - 300W	20W - 150W
Recommended amp power	50W RMS - 100W Peak	100W RMS - 400W Peak	75W RMS - 150W Peak
Power 70/100V	5W, 10W, 20W, 40W	300W (150W RMS)	50W
Crossover settings	-	-	-
Operating temperatures	-20°C to 65°C	-20°C to 65°C	-20°C to 65°C
Dimensions (HXWxD ou ØxD)	12¾ x 12¾ x 8⅝" (32 x 32 x 21cm)	14⅞ x 36¼ x 22⅞" (38 x 92 x 56cm)	11⅞ x 17⅞ x 17⅞" (29 x 44 x 44cm)
Mounting dimensions (Ø)	-	-	-
Mounting depth	-	-	-
Finishes			
Weight	5.8lbs (2.5kg)	41lbs (19kg)	14.5lbs (6.5 kg)
Accessory (optional)	-	-	-



200 ICW6	200 ICW8
2-way coaxial in-wall/in-ceiling	2-way coaxial in-wall/in-ceiling
<ul style="list-style-type: none"><li>• 6½" (16.5cm) Iris IP Mid-Bass</li><li>• 1" (25mm) Aluminium 'M'-shaped inverted dome tweeter</li></ul>	<ul style="list-style-type: none"><li>• 8" (20cm) Iris IP Mid-Bass</li><li>• 1" (25mm) Aluminium 'M'-shaped inverted dome tweeter</li></ul>
65Hz - 28kHz	48Hz - 28kHz
89dB	90dB
8Ω	8Ω
-	-
25 - 130W	25 - 150W
-	-
Indoor/Outdoor switch	Indoor/Outdoor switch
-25°C to 90°C	-25°C to 90°C
8¼ x 3¾" (21 x 9.5cm)	10⅞ x 4⅞" (25.5 x 11.3cm)
8¾" (21cm)	10⅞" (25.5cm)
3¾" (9.5cm)	4⅞" (11.3cm)
-	-
3.1lbs (1.8kg)	5.8lbs (2.5kg)
6" tilted stand	8" tilted stand

PACK LITTORA OD 4.1
4 x 200 OD SAT 5 1 x 200 OD SUB 12



---

# 03.

## 100 SERIES

### Discreet musicality

The 100 OD6 and 100 OD8 loudspeakers offer Focal quality sound reproduction outdoors. Just like the other models in the 100 Series range, they contain an aluminium inverted dome tweeter and a Polyglass treated bass/midrange speaker driver at the source of their excellent performance. IP66-certified and benefiting from anti-UV treatment, they are resistant to all weathers and are easily mounted either vertically or horizontally.

---







Polyglass  
cone



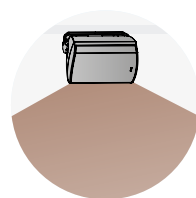
Horizontal or  
vertical position



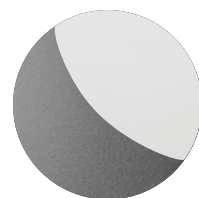
Certified  
waterproofing (IP66)



Closed-back  
construction



Wide sound  
dispersion



White / Black  
finish







100 OD8		100 OD6	
Type	Outdoor loudspeaker	Outdoor loudspeaker	
Speaker drivers	<ul style="list-style-type: none"><li>8" (21cm) Polyglass Mid-Bass</li><li>1" (25mm) Aluminium inverted dome tweeter</li></ul>	<ul style="list-style-type: none"><li>6 1/2" (16.5cm) Polyglass Mid-Bass</li><li>1" (25mm) Aluminium inverted dome tweeter</li></ul>	
Frequency response	60Hz - 23kHz	65Hz - 23kHz	
Sensitivity (2.83V/1m)	88dB	87dB	
Nominal impedance	8Ω	8Ω	
IP certification	IP66	IP66	
Recommended amp power	20 - 150W	20 - 120W	
Dimensions with brackets (HxWxD)	15 5/16 x 10 3/16 x 11" (39 x 25.8 x 28cm)	12 9/16 x 8 13/16 x 10 1/16 (31.9 x 22.4 x 25.6cm)	
Finishes	 	 	
Weight	12.6lbs (5.8kg)	9lbs (4.1kg)	



---

# ELECTRONICS

**01.** ASTRAL 16 97

**02.** CI SERIES 103

**03.** UNITI 109

**04.** MU-SO 119

---





---

# 01.

## ASTRAL 16

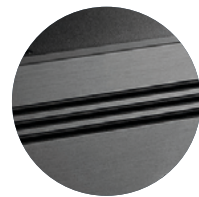
### Sound immersion

Astral 16 is a 16-channel audio-video processor and amplifier that allows you to enjoy your private cinema screenings at their best. Compatible with Control4, Crestron, Savant and RTI, this cutting-edge electronic device incorporates 12 class-D amplified channels and handles all audio formats (Dolby Atmos®, DTS:X™ etc.). You can control whichever system you want by room via an app, enjoy access to technical support at any time and customise your system as desired.

---



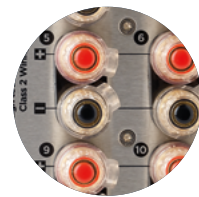




Audio-video processor



Upgradable product



12 x 250W RMS



Home Theater & Multiroom



Dolby Atmos®  
DTS:X™, Auro 3D®



Dirac Live® acoustics correction







— —

ASTRAL 16

Type	16 channel audio-video processor and amplifier	
Main features	• Compatible formats	Dolby Atmos® / DTS:X™ / Auro-3D®
	• Calibration	Powered by Dirac Live®: target curve editable from 20Hz to 20kHz for all channels (including subwoofers), phase correction full bandwidth 20Hz - 20kHz on all channels (including subwoofers)
	• 'Remote Monitoring' function	
Multichannel / Surround Processing	• Output channels	16
	• Decoding / upmixing channels	Up to 16 channels
	• Input sampling rate supported	Up to 192kHz
	• Stereo downmix	
	• Bass management	Fully flexible
	• Multi-subwoofer channels	Unlimited
	• Multi-way crossover	(6-12-18-24-36-48dB/oct)
	• 20 Parametric EQ per channel	
HDMI	• HDMI inputs	7 : HDMI 2.0 / HDCP 2.2
	• HDMI outputs (mirror)	1 : HDMI 2.0 / HDCP 2.2 (with eARC) 2 : HDMI 2.0 / HDCP 2.2
	• Supported video format	up to 4K UHD
	• High Dynamic Range	HDR10 / HLG
	• Color Space and Subsampling	4:4:4, 4:2:2, 4:2:0
	• Deep Color	12 bpc
	• Max resolution supported	4K 60fps 4:4:4 8bpc 3D / 4K / eARC
Audio Inputs	• Digital input	3 x coaxial, 3 x optical
	• Analog stereo inputs	4 x RCA inputs
Amplified Audio Outputs	• Amplified main outputs	12
	• Analog main outputs, balanced	4 x XLR
	• Stereo downmix outputs, balanced	2 x XLR
	• Technology	Class D
	• Amplified channels	12
	• Continuous power output, per channel, to 0.1%THD	8Ω / 4Ω / 2.7Ω
	• 3 channels driven simultaneous	200W / 400W / 650W
	• 6 channels driven simultaneous	200W / 350W / 350W
	• 12 channels driven simultaneous	200W / 300W

Set-Up Management	• Configurable multi-theater management • Configurable audio zones management • Unlimited Theater and audio zones listening presets • Backup and restore of set-up • Firmware update via USB/network	
Control Inputs and Outputs	• USB type A	2
	• Ethernet	
	• Trigger	4 (out)
	• IR remote ports, in/out	1 / 1
Control and custom Installation	• Web-based product configurator • TCP/IP API based control • Focal Remote iPad® control application • Home automation • Front panel display	
		Control4, Crestron, RTI and Savant TFT 4.3"
Power Supply	• Voltage range	100V to 240V
	• Type	SMPS
	• Range selection	Universal
Supplied with	• Calibrated measurement microphone and tripod • Dirac Live® license • 32.9ft (10m) cable with infra-red detector • Mounting kit	
Dimensions avec stands (HxWxD)	7½ x 18⅞ x 19⅝" (19.1 x 47.9 x 49cm )	
Weight	Weight net with stands	44.1lbs (20kg)
	Weight net with accessories for rack	50.7lbs (23kg)

---

## 02. CI SERIES

**The best in integrated audio**

The Naim CI Series range of electronics has been designed to be the perfect complement to Focal integrated loudspeakers, as well as hi-fi speakers such as Theva and Aria Evo X. Combining versatility, compactness, upgradability and sound quality, these streaming and amplification solutions cater to all installation preferences with both power and discretion.

---







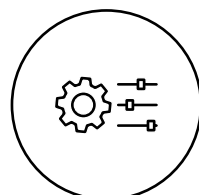
Compact  
and powerful



High-resolution  
streaming



Focal & Naim  
Manager software



Integrated DSP &  
Focal Speaker Profiles



Rackable  
products



Multiroom  
app





CI-NAP 101			CI-NAP 108			
Type		Amplifier		Amplifier		
Number of channels		1		8		
Power low impedance	8Ω	500W		150W		
	4Ω	800W		260W		
Power high impedance	100V	240W		-		
	70V	150W		-		
Audio Inputs		Analogue – RCA stereo Combined to mono (47kΩ)		Analogue - RCA (47kΩ)		
Audio Outputs	Line		Stereo RCA		Line	RCA
	Low Impedance		Euroblock			
	70V		Euroblock		Speakers	Euroblock
	100V		Euroblock			
Total Harmonic Distortion		<0.008%		<0.006%		
Gain		29dB		29dB		
Signal-to-noise ratio		110dB (A-weighted)		105dB (A-weighted)		
Frequency response (-3dB)	Low impedance		3Hz - 70kHz		3Hz - 70kHz	
	High impedance		50Hz/120Hz - 25kHz			
Operating power supply		100V to 240V +/-10%, 50/60Hz		100V to 240V +/-10%, 50/60Hz		
Wired automation		12V in/out		12V in/out		
Rack height		1U		1.5U		
Dimensions (HxLxD)		1¾ x 17⅝ x 11¾" (4.45 x 44 x 30cm)		2⅝ x 17⅝ x 11¾" (6.66 x 44 x 30cm)		
Weight		19.6lbs (8.9kg)		15.4lbs (7.7kg)		

CI-UNITI 102		
Type	Streamer amplifier	
Number of channels	Line	4
	Amp	2
Power (Low Impedance)	8Ω	150W
	4Ω	260W
Audio Inputs	<ul style="list-style-type: none"><li>Analogue - Stereo RCA - (47kΩ / 2.5V RMS)</li><li>S/PDIF - up to 24bit/96kHz</li><li>HDMI eARC - LPCM up to 24bit/192kHz Stereo</li></ul>	
Audio Outputs	<ul style="list-style-type: none"><li>Main: 1 Stereo RCA</li><li>Amplified: Terminal block / Euroblock / Banana connector - 4mm</li><li>Sub/Aux : 1 Stereo RCA</li></ul>	
Compatible streaming services	TIDAL • TIDAL Connect • Spotify Connect - Free + Premium support • Qobuz UPnP™ with PlayQueue • Internet Radio + Podcasts • AirPlay 2 • ChromeCast v2 Dante Receiver - 48kHz supported • Bluetooth® Classic Audio Receiver • SBC + AAC supported	
User interface	<b>Focal &amp; Naim App:</b> Basic use • <b>Focal &amp; Naim Manager:</b> Configuration	
Compatible operating systems	<b>Focal &amp; Naim:</b> iOS et Android • <b>Focal &amp; Naim Manager:</b> Windows, MacOS	
Multiroom	Naim Multiroom - Up to 32 devices on a single session Compatible with all generations of Naim streamers	
Integration partners	Control4, Crestron, ELAN, Savant	
Wired automation	2 x 1/8" (3.5mm) mono jack connectors - 12V trigger outputs	
Network	<ul style="list-style-type: none"><li>RJ45 Gigabit Ethernet - compatible with IPv4 and IPv6</li><li>802.11ax (Wi-Fi 6) - 2x2 MIMO - External antenna</li><li>Bluetooth LE v5.1 - External antenna shared with Wi-Fi 1</li></ul>	
Total Harmonic Distortion	<0.006%	
Gain	29dB	
Signal-to-noise ratio	110dB (A-weighted)	
Frequency response (-3dB)	5Hz - 70kHz	
Max sampling rate	32 bit / 384 kHz	
Operating power supply	100V to 240V +/-10%, 50/60Hz	
Rack height	1U	
Dimensions (HxLxD)	1¾ x 11¾ x 11¾" (4.45 x 30 x 30cm)	
Weight	9.9lbs (4.5kg)	



---

# 03.

## UNITI

**Amplify your emotions**

The Uniti range from Naim Audio comprises all-in-one players that work individually or in combination with other devices. Simply add loudspeakers to allow your music to express itself fully in any room in your home. Assembled by hand by the Naim experts in their Salisbury workshops in England, these sleek and compact players offer a deep immersive sound.

---



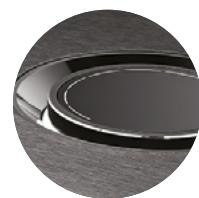




Multiroom  
Naim app



Glass LCD  
colour screen



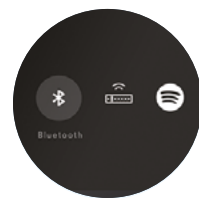
Volume  
wheel



Brushed  
Aluminium



High-resolution  
streaming



Multiple  
sources







UNITI NOVA PE	
Type	All-in-one music streaming player
Streaming	Qobuz, TIDAL, TIDAL Connect, Spotify™ Connect, Internet Radio, Apple AirPlay 2, Chromecast Built-in, Blueetooth® (AptX™ HD), UPnP™ (High-Res streaming), Roon Ready
Audio inputs	<ul style="list-style-type: none"><li>• 2 x Optical Toslink (up to 24bits/96kHz)</li><li>• 2 x Coaxial RCA (up to 24bits/192kHz, DoP 64Fs)</li><li>• 1 x BNC (up to 192kHz, DoP 64Fs)</li><li>• 1 x HDMI ARC</li><li>• 2 x RCA pairs</li><li>• 2 x 5-pin DIN</li><li>• 2 x USB Type A socket (front and rear)</li></ul>
Audio outputs	<ul style="list-style-type: none"><li>• 1 x Stereo power amplifier</li><li>• 1 x 4-pin DIN</li><li>• 1 x RCA sub/pre pair</li><li>• 1 x 3.5mm headphone jack</li></ul>
USB	2 x USB Type A Socket (front and rear)
Multiroom	Sync up to five Naim Streaming products and control via the Focal & Naim App
Amplifier output	150W 8Ω @ 0,1 % THD+N
Dimensions (HxWxD)	4½ x 17 x 10⅝" (11.6 x 43.2 x 26.5cm)
Weight	33.3lbs (15.1kg)



UNITI NOVA	
All-in-one music streaming player	
Qobuz, TIDAL, TIDAL Connect, Spotify™ Connect, Internet Radio, Apple AirPlay 2, Chromecast Built-in, Blueetooth® (AptX™ HD), UPnP™ (High-Res streaming), Roon Ready	
<ul style="list-style-type: none"><li>• 2 x Optical Toslink (up to 24bits/96kHz)</li><li>• 2 x Coaxial RCA (up to 24bits/192kHz, DoP 64Fs)</li><li>• 1 x BNC (up to 192kHz, DoP 64Fs)</li><li>• 1 x HDMI ARC</li><li>• 2 x RCA pairs</li><li>• 2 x 5-pin DIN</li><li>• 2 x USB Type A socket (front and rear)</li><li>• 1 x SD card</li></ul>	
<ul style="list-style-type: none"><li>• 1 x Stereo power amplifier</li><li>• 1 x RCA sub/pre pair</li><li>• 1 x 3.5mm headphone jack</li></ul>	
2 x USB Type A Socket (front and rear)	
Sync up to five Naim Streaming products and control via the Focal & Naim App	
80W per channel into 8Ω	
3¾ x 17 x 10½" (9.5 x 43.2 x 26.5cm)	
28.7lbs (13kg)	

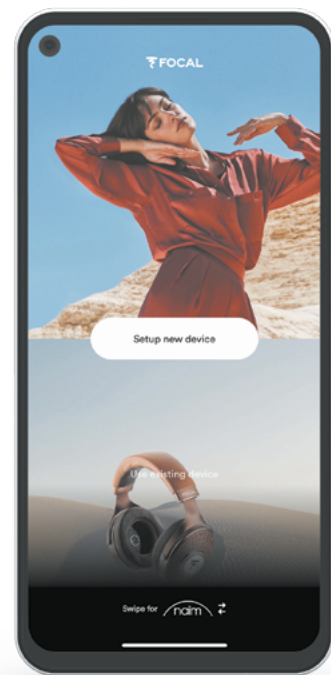


UNITI STAR	
Type	All-in-one music streaming player
Streaming	Qobuz, TIDAL, TIDAL Connect, Spotify™ Connect, Internet Radio, Apple AirPlay 2, Chromecast Built-in, Bluetooth® (AptX™ HD), UPnP™ (High-Res streaming), Roon Ready
Audio inputs	<ul style="list-style-type: none"><li>• 2 x Optical Toslink (up to 24bit/96kHz)</li><li>• 2 x Coaxial RCA (up to 24bit/192kHz, DoP 64Fs)</li><li>• 1 x BNC (up to 192kHz, DoP 64Fs)</li><li>• 1 x HDMI ARC</li><li>• 1 x RCA pair</li><li>• 1 x 5-pin DIN</li><li>• 2 x USB Type A socket (front and rear)</li><li>• 1 x SD card</li></ul>
Audio outputs	<ul style="list-style-type: none"><li>• 1 x Stereo power amplifier</li><li>• 1 x RCA sub/pre pair</li><li>• 1 x 3.5mm headphone jack</li></ul>
USB	2 x USB Type A Socket (front and rear)
Multiroom	Sync up to five Naim Streaming products and control via the Focal & Naim App
Amplifier output	70W per channel into 8Ω
Dimensions (HxWxD)	3¾ x 17 x 10½" (9.5 x 43.2 x 26.5cm)
Weight	26.5lbs (12kg)



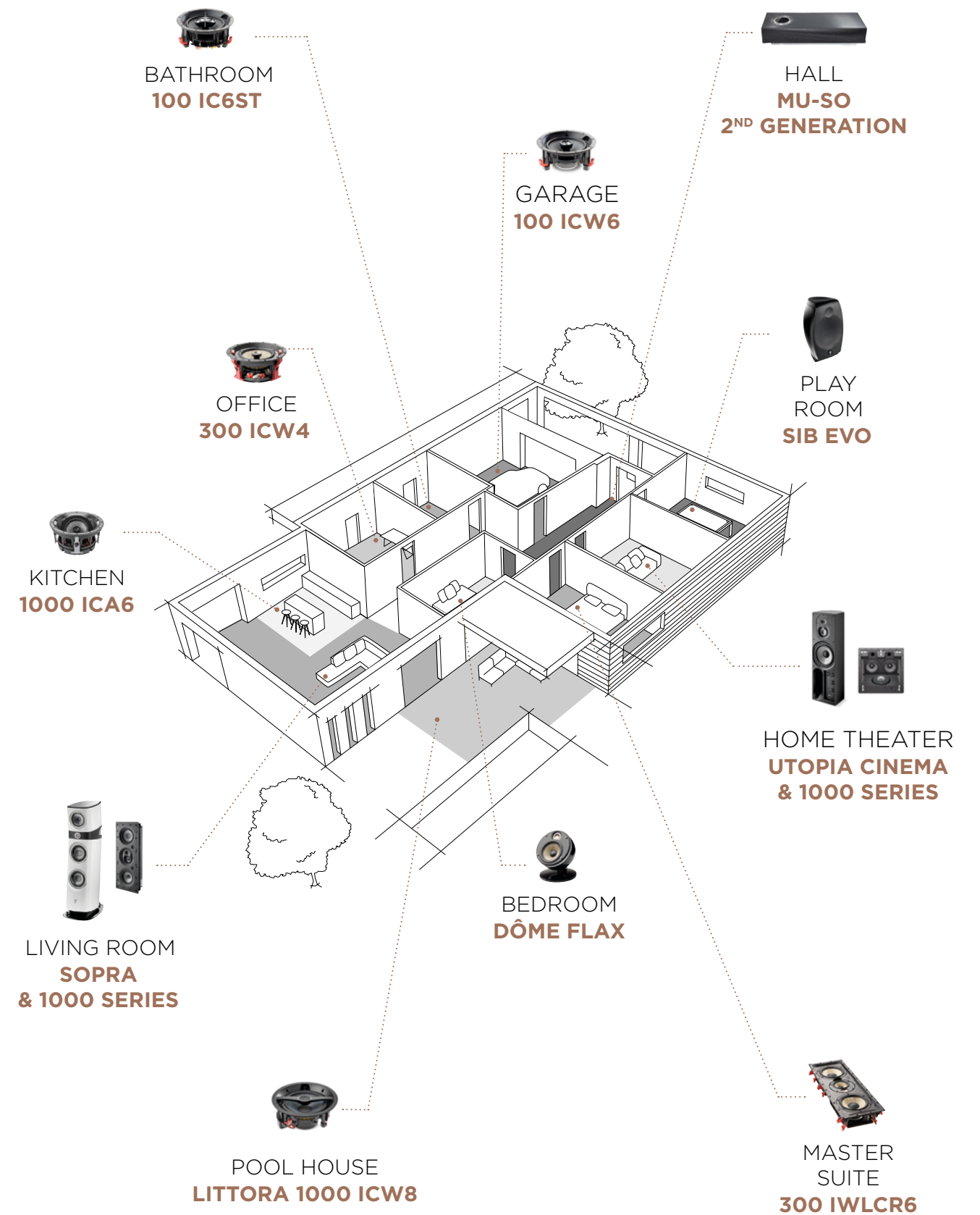
UNITI ATOM	
All-in-one music streaming player	
Qobuz, TIDAL, TIDAL Connect, Spotify™ Connect, Internet Radio, Apple AirPlay 2, Chromecast Built-in, Bluetooth® (AptX™ HD), UPnP™ (High-Res streaming), Roon Ready	
<ul style="list-style-type: none"><li>• 2 x Optical Toslink (up to 24bit/96kHz)</li><li>• 1 x Coaxial RCA (up to 24bit/192kHz, DoP 64Fs)</li><li>• 1 x HDMI ARC</li><li>• 1 x RCA pair</li><li>• 2 x USB Type A socket (front and rear)</li></ul>	
<ul style="list-style-type: none"><li>• 1 x Stereo power amplifier</li><li>• 1 x RCA sub/pre pair</li><li>• 1 x 3.5mm headphone jack</li></ul>	
2 x USB Type A Socket (front and rear)	
Sync up to five Naim Streaming products and control via the Focal & Naim App	
40W per channel into 8Ω	
3¾ x 9⅝ x 10½" (9.5 x 24.5 x 26.5cm)	
15.45lbs (7kg)	





# F&N APP

Available on iOS and Android, the simple yet sophisticated Focal x Naim App lets you easily control and organise your audio experience across all connected Naim products. Play music in every room, adjust the volume, choose your tracks, browse album covers, create playlists, save your favourite radio stations, and much more.



---

# 04.

## MU-SO

### Remastered excellence

Mu-so 2<sup>nd</sup> Generation from Naim Audio is a wireless all-in-one system that deliver high-resolution listening experiences, whether you want to enjoy your digital musical collection, Internet radio or streaming platforms. You will also benefit from multi-room installation options, multiple features and, of course, musical power delivered by their Focal-optimised speaker drivers.

---







Multiroom  
application



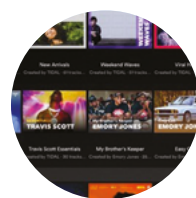
Aluminium  
heatsink



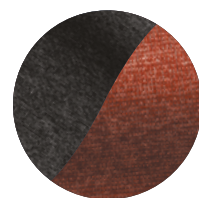
Interactive  
control crown



Brushed  
Aluminium finish

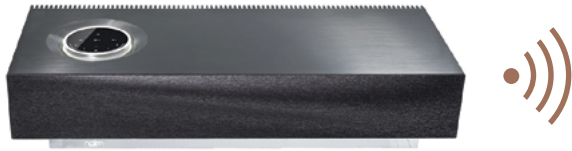


Integrated  
streaming services



Black or  
coloured grille





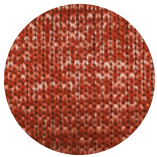
MU-SO 2 <sup>ND</sup> GENERATION		
Type	3-way bass-reflex stereo connected speaker	
Audio Inputs	HDMI	ARC and CEC
	Streaming	Apple AirPlay 2, Chromecast Built-in, UPnP™, Spotify® Connect, TIDAL, Roon Ready, Bluetooth®, Internet Radio, Qobuz
	Analogue	3.5mm Jack
	USB	USB 2 (Type A connector)
	Digital optical toslink	S/PDIF up to 24bit/96kHz
Finishes	Burnished and anodised aluminium casework, CNC milled, bead blasted and anodised aluminium heatsinks, dual-tone grey and black fabric grille	
Power	Amplifier Output 450W - (6 x 75W)	
Dimensions (HxWxD)	4¾ x 24¾ x 10⅞" (12.2 x 62.8 x 26.4cm)	
Weight	24.7lbs (11.2kg)	



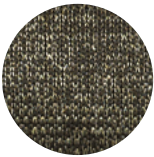
Black



Peacock



Terracotta



Olive

MU-SO GRILLE

Compatible with  
the standard edition



---

# COMMERCIAL SOLUTIONS

100-T SERIES 127



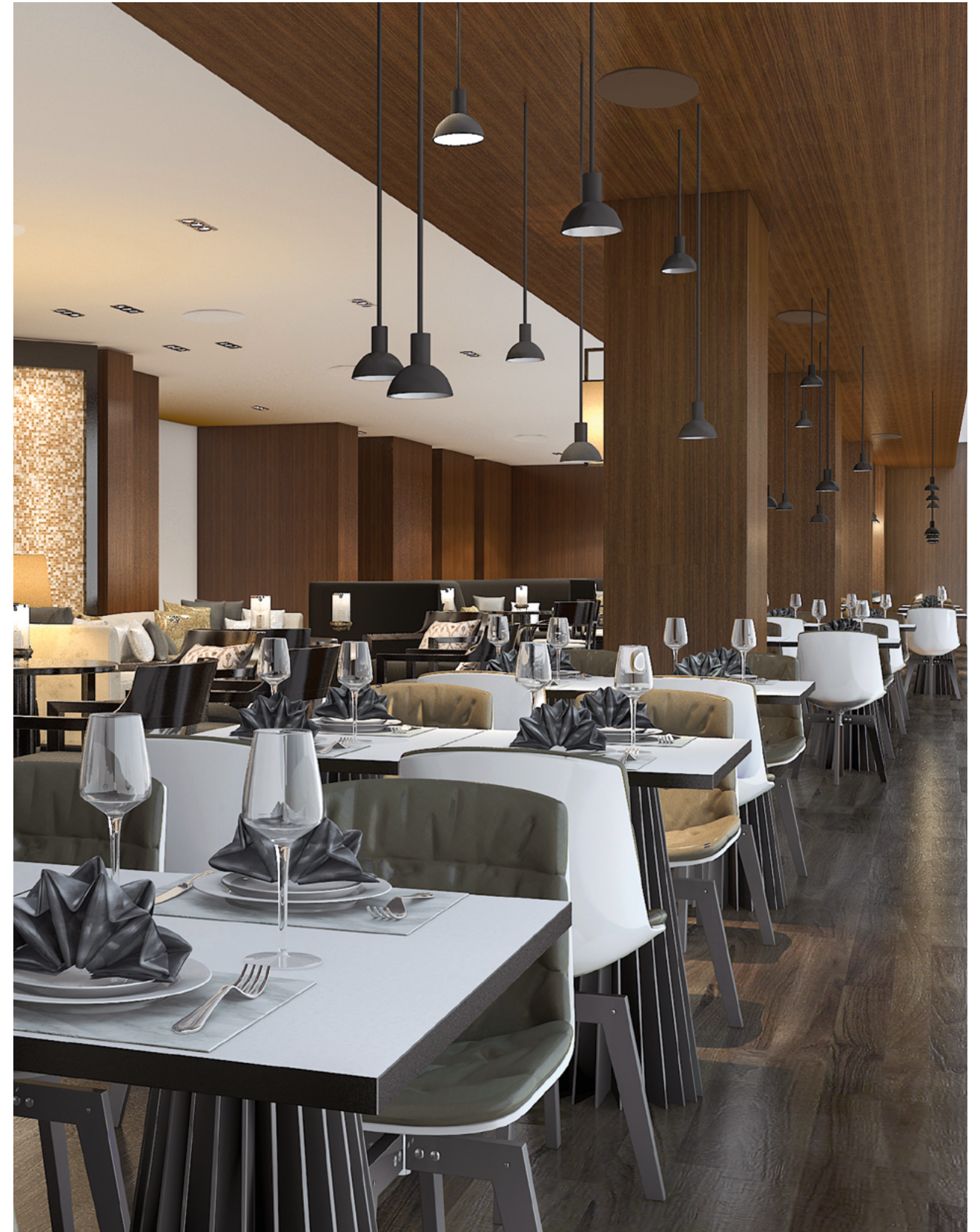
---

# 100-T SERIES

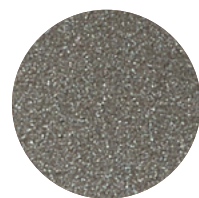
**Focal sound for large spaces**

The 100-T Series is a direct descendant of the 100 Series, but with the addition of a transformer that adjusts the power of the loudspeakers for 70V/100V systems. This makes it possible to cover a very large listening area and minimise amplifier channels. The compact design and low directivity of the speaker drivers make them incredibly discreet and musically uniform, whilst Focal's expertise guarantees your large spaces will have that incredible sound signature.

---



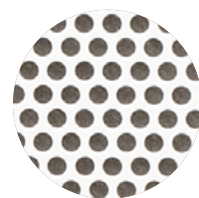




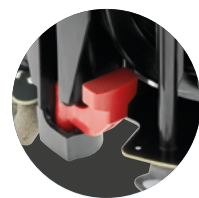
Polyglass  
cone



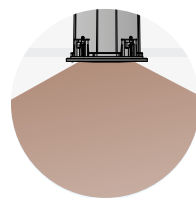
Positionable  
tweeter



Ready-to-paint  
grille



Unibody  
chassis



Wide  
dispersion







High impedance  
70V/100V





	100 ICW8-T	100 ICW6-T	100 ICW5-T
Type	2-way coaxial in-wall/in-ceiling 70V/100V line installation	2-way coaxial in-wall/in-ceiling 70V/100V line installation	2-way coaxial in-wall/in-ceiling 70V/100V line installation
Speaker drivers	<ul style="list-style-type: none"><li>8" (21cm) Polyglass Mid-Bass</li><li>1" (25mm) Aluminium inverted dome tweeter</li></ul>	<ul style="list-style-type: none"><li>6" (16.5cm) Polyglass Mid-Bass</li><li>1" (25mm) Aluminium inverted dome tweeter</li></ul>	<ul style="list-style-type: none"><li>5" (13cm) Polyglass Mid-Bass</li><li>1" (25mm) Aluminium inverted dome tweeter</li></ul>
Frequency response	53Hz - 23kHz	62Hz - 23kHz	65Hz - 23kHz
Power in 70V	7.5/15/30W	4/7.5/15W	2/4/7.5W
Power in 100V	15/30/60W	7.5/15/30W	4/8/15W
Sensitivity (2.83V/1m)	90dB	89dB	88dB
Nominal impedance	8Ω	8Ω	8Ω
Recommended amp power	25 - 100W	25 - 100W	15 - 100W
Dimensions (ØxP)	9¾ x 4¾" (24.8 x 11.1cm)	8⅝ x 3¾" (20.8 x 9.5cm)	7¼ x 4" (18.4 x 10cm)
Mounting dimensions	8⅜" (22.4cm)	7¼" (18.4cm)	6⅜" (15.7cm)
Mounting depth	4¼" (10.7cm)	3⅝" (9.1cm)	3¾" (9.6cm)
Weight (with grille)	5lbs (2.3kg)	3.75lbs (1.7kg)	3.5 lbs (1.6kg)



	100 OD8-T	100 OD6-T
Type	Outdoor loudspeaker (IP66 certified)	Outdoor loudspeaker (IP66 certified)
Speaker drivers	<ul style="list-style-type: none"><li>8" (21cm) Polyglass Mid-Bass</li><li>1" (25mm) Aluminium inverted dome tweeter</li></ul>	<ul style="list-style-type: none"><li>6⅞" (16.5cm) Polyglass Mid-Bass</li><li>1" (25mm) Aluminium inverted dome tweeter</li></ul>
Frequency response	60Hz - 23kHz	65Hz - 23kHz
Power in 70V	15/30/60W	7.5/15/30W
Power in 100V	30/60/120W	15/30/60W
Sensitivity (2.83V/1m)	88dB	87dB
Nominal impedance	8Ω	8Ω
Recommended amp power	20 - 150W	20 - 120W
Dimensions with brackets (HxWxD)	15 <sup>5</sup> / <sub>16</sub> x 10 <sup>3</sup> / <sub>16</sub> x 11" (39 x 25.8 x 28cm)	12 <sup>9</sup> / <sub>16</sub> x 8 <sup>13</sup> / <sub>16</sub> x 10 <sup>1</sup> / <sub>16</sub> (31.9 x 22.4 x 25.6cm)
Finishes	 	 
Weight	12.6lbs (5.8kg)	9lbs (4.1kg)



UL

Safety certification

The 100-T Series in-ceiling coaxial loudspeakers are UL-certified (UL 1480 and UL 2043). Those are recognised american standards for fire and electric shock risks, meaning they are fully compliant with current regulations on fire and electric shock risks.



	100 IC8-T UL	100 ICS6-T UL
Type	2-way coaxial bass-reflex in-ceiling 100V/70V or 8Ω installations Steel back can	2-way coaxial bass-reflex in-ceiling 100V/70V or 8Ω installations Steel back can
Speaker drivers	<ul style="list-style-type: none"><li>8" (21cm) Polyglass Mid-Bass</li><li>1" (25mm) Aluminium inverted dome tweeter</li></ul>	<ul style="list-style-type: none"><li>6½" (16cm) Polyglass Mid-Bass</li><li>1" (25mm) Aluminium inverted dome tweeter</li></ul>
Frequency response	53Hz - 23kHz	70Hz - 23kHz
Power in 70V	7.5/15/30W	4/8/15W
Power in 100V	15/30/60W	8/15/30W
Sensitivity (2.83V/1m)	91dB	89dB
Nominal impedance	8Ω	8Ω
Recommended amp power	15 - 150W	15 - 100W
Certifications	UL 1480 / UL 2043	UL 1480 / UL 2043
Dimensions (ØxP)	11¾ x 8⅞" (29.7 x 22.5cm)	11¾ x 4⅞" (29.7 x 11.6cm)
Mounting dimensions	10⅜" (26.5cm)	10⅜" (26.5cm)
Mounting depth	8⅜" (21.2cm)	4" (10.3cm)
Weight (with grille)	9.37lbs (4.25 kg)	7.5lbs (3.4kg)

# ACCESSORIES

Integrated loudspeakers

# PRE-ASSEMBLY KITS

These kits allow you to precisely position in-wall and in-ceiling products in new builds. They comprise a mounting strip combined with a frame for the perfect placement of your loudspeakers.

Product compatibility
1000 IWLCR UTOPIA
2 X IWSUB UTOPIA
1000 IWSUB UTOPIA
1000 IWLCR UTOPIA & 1000 IWSUB UTOPIA
1000 IWLCR UTOPIA & 2 X 1000 IWSUB UTOPIA
1000 IWLCR6
1000 IW6
1000 ICW6
1000 ICA6
1000 ICLCR5
300 ICLCR5
300 IWLCR6
300 IW6
300 ICW8
300 ICW6
300 ICW4
100 IWLCR5
100 IW6
100 ICLCR5
100 ICW8 / 100 ICW8-T
100 ICW6 / 100 ICW6-T
100 IC6ST
100 ICW5 / 100 ICW5-T
100 IC8-T UL
100 ICS6-T UL



# ON-WALL FRAMES

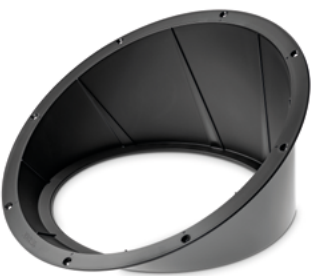
Mounted frames allow loudspeakers to be installed on walls. They are available in White High Gloss or raw, ready-to-paint finish. Slim, in-wall anti-vibration studs allow for easy installation.



Product compatibility
1000 IWLCR UTOPIA
1000 IWSUB UTOPIA
1000 IWLCR6
1000 IW6

# TILTED STANDS

For a made-to-measure installation, a tilted stand is available as an accessory for Littora products, allowing you to determine the angle of the speaker drivers and diffuse the sound in the direction of your choice.



Product compatibility
LITTORA 1000 ICW10
LITTORA 1000 ICW8
LITTORA 200 ICW8
LITTORA 200 ICW6

# FIRE BACKCAN

Designed with materials specially adapted to high temperatures, this fire-proof built-in casing ensures your installation is safe, for perfect reliability. It also provides sound insulation.



Insulator	Product compatibility			Dimensions (HxWxD)
	1000 SERIES	300 SERIES	100 SERIES	
1 5/8" (40mm) ceramic fibre	1000 ICW6	300 ICW4 300 ICW6 300 IW6	100 ICW5 100 ICW6 100 ICW8 100 IC6ST 100 IW6	18 7/8 x 19 x 5 7/8" (47.8 x 48.2 x 14.9cm)





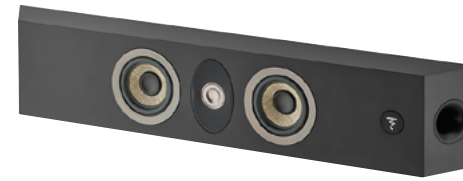
1000 SERIES



300 SERIES



100 SERIES



ON WALL 300



ASTRAL 16



'The 1000 Series goes even further in terms of acoustic performance and integration possibilities'

RESIDENTIAL TECH



'Stunning new flagship CI speaker range combines class-leading performance, unique technologies and extreme flexibility, for the ultimate integration experience'

HOME THEATER HIFI

'Among the easiest to fit in-ceiling loudspeakers on the market'

HOME CINEMA CHOICE



'Reference-grade sound from an in-wall speaker'

AUDIOHOLICS

'My day-to-day music listening and home theater system, without regret'

HOME THEATER

'The sound is rich, the soundscape large and there is more than enough bass in them'

L&B TECH REVIEWS

'Focal's 100 ICLCR5 is a rare exception of an in-ceiling speaker that does a great job reproducing your home theater's front soundstage'

CRUTCHFIELD

'An acoustic wall art for audiophiles keen on discretion'

ON MAG

'They will delight the passionate ones who are looking for a high-end solution dedicated to all uses'

COBRASON BLOG

'The next best thing to in-wall speakers'

WHAT HIFI



'An experience that was spine-tingling'

HOME CINEMA CHOICE

'This is high-end hardware fit for the finest of setups'

AVTECH MEDIA







## DÔME FLAX

'Focal's Dôme Flax sound great anywhere'

DIGITAL TRENDS

'A lovely soundstage, fantastic neutrality, and great detail'

RESIDENTIAL SYSTEMS

'High-quality, ultra-compact, satellite style loudspeakers'

TRUSTED REVIEWS



## SIB EVO

'An excellent immersive audio experience'

AVFORUMS



'Good clarity and excellent surround integration'

CNET



'Great solution for those looking for effective Dolby Atmos®'

TRUSTED REVIEWS



## UNITI

'The looking is as impressive as the sound'

WHAT HI-FI



'Among a constellation of competitors, the Naim Uniti Nova is a shining star'

ROBB REPORT



'Pretty perfect. Cements Naim's reputation as the Aston Martin of the audio world'

FORBES



## MU-SO

'The best wireless speakers deliver top sound quality'

T3



'Comfortably the best all-in one we looked at this year'

AV FORUMS



'Put simply, it's difficult to go back to any other wireless speaker after trying the Qb'

THE INDEPENDANT

---

# COLLECTIONS

Combining performance and design, Focal's collections are a revelation, awakening the emotions : at home with hi-fi, connected loudspeakers, Home Cinema systems and open-/closed-back headphones; on the go with incar kits; during travel with Bluetooth® Noise Cancelling Headphones; in the studio with monitors and professional headphones ; for outdoor spaces and at sea with yacht solutions.

---



Home Collection



Motorities Collection



Professional Collection



---

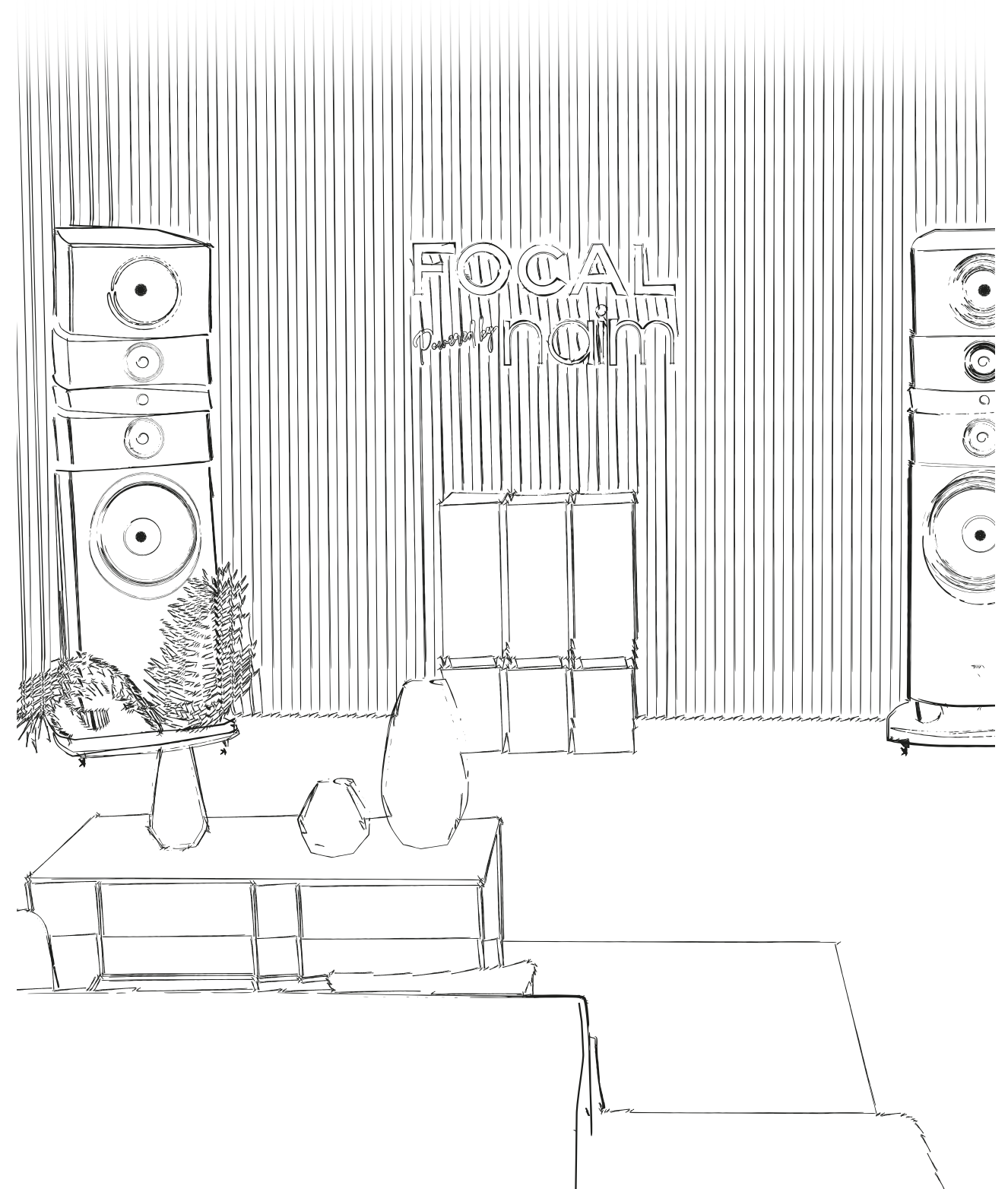
# FOCAL *Powered by* naim

Enjoy an incredible sound experience

Find our products in 10,000 retail partner stores across the world, but also in our Focal Powered by Naim shops. These stores, dedicated to our brands, invite you to dive into our world, our savoir-faire and immerse yourself in the Focal & Naim sound.

[www.focalpoweredbynaim.com](http://www.focalpoweredbynaim.com)

---



For more information, find us at:

**[www.focal.com](http://www.focal.com)**





Focal JMLab®

BP 374 - 108, rue de l'Avenir - 42353 La Talaudière cedex - France - +33 (0) 477 435 700

Focal® is a registered trademark of Focal JMLab®, Naim® is a registered trademark of Naim Audio®.  
Due to constant technological advances, Focal JMLab® and Naim Audio® reserve the right to modify prices and specifications without notice.  
Non-binding pictures. Pictures : L'Atelier Sylvain Madelon / Envato Elements. SCAA/15/05/2024 - v5

